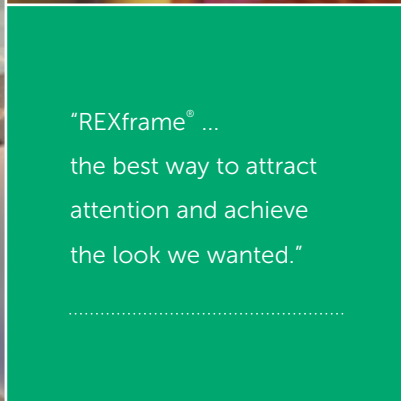




REXframe®
Reusable Textile + Frame System

www.REXframe.com



Contents

▲ The Rexframe® System	04
▲ The Profiles	05
▲ Profiles	
Universal Retro	06
System Adapters	07
Single Sided	08
Double Sided	09
Shapes & Forms	10
Lightbox	11
Support & Structure	12
D'LiTe Range	13
REXwall System	14
▲ Led Lights	15
▲ Accessories Tools Lighting	16 - 20
▲ Gallery	21 - 23



The REXframe® System

The REXframe® system: **simple, versatile, clever and cost effective**

REXframe® profiles can be assembled in just a few steps and are available in a range of profiles or custom designed to maximise the use of your space.

The REXframe® components: **lightweight aluminium frame and fabric prints**

The sturdy aluminium frame is assembled using a simple connector system and has the option of high powered LED lighting. The fabric prints have a rubber lip which is easily inserted into the frame. The elasticity of the fabric ensures a perfect fit.

The REXframe® fabrics: **rich, vibrant, colourfast and machine washable**

Advantages

Minimal freight costs

REXframe® are shipped unassembled; there is no bulky packaging and lower costs for freight

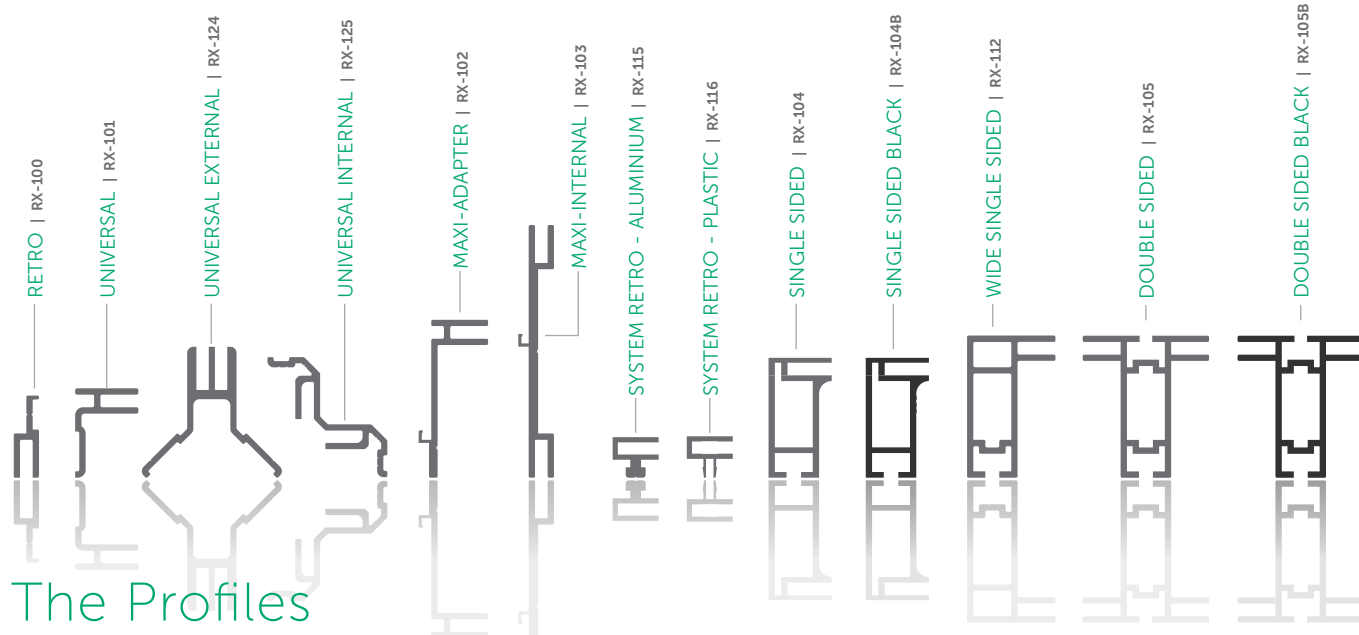
Simple assembly

The REXframe® assembly system is designed for simplicity. They can often be assembled within minutes without tools or training.

Easy to change

You can create a whole new look by simply changing the fabric image in your frame.

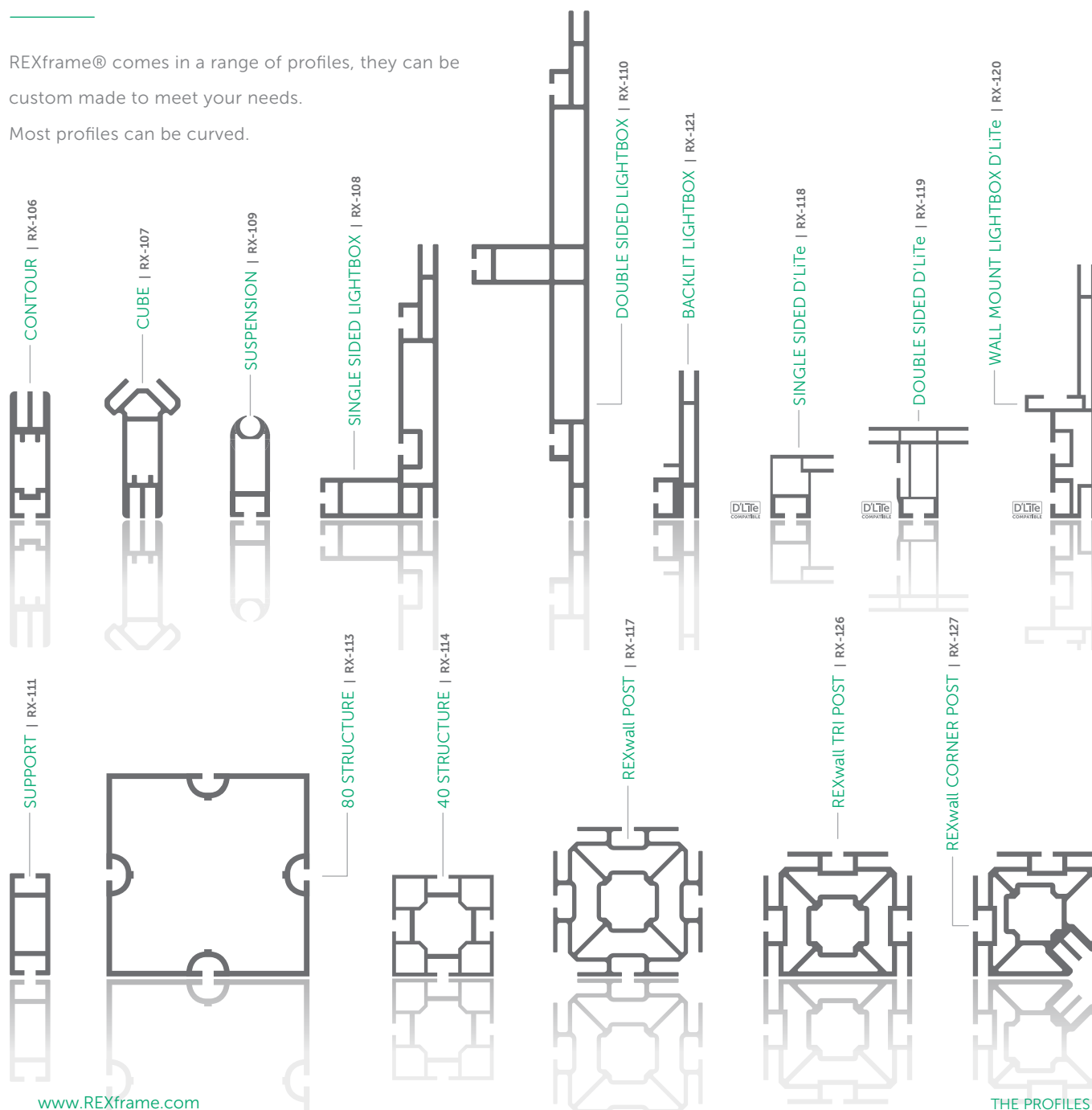
Machine washable fabrics

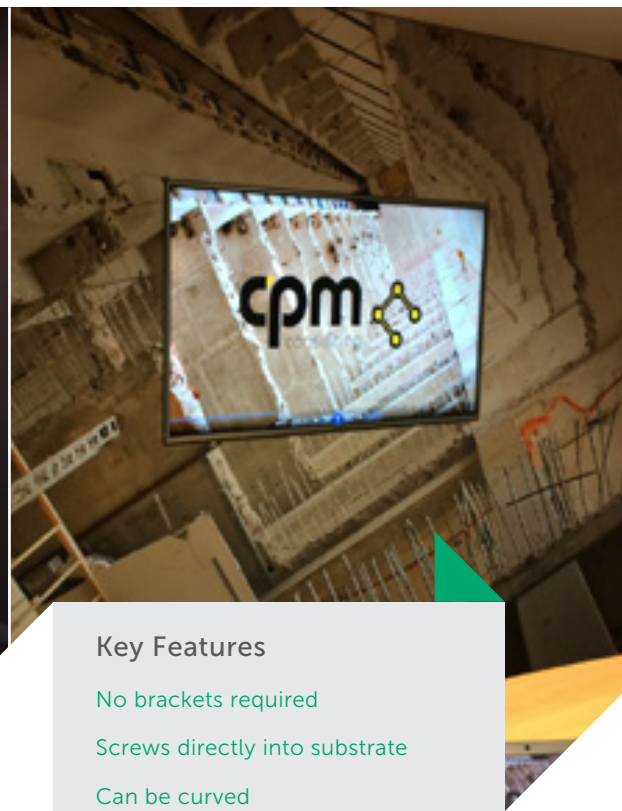


The Profiles

REXframe® comes in a range of profiles, they can be custom made to meet your needs.

Most profiles can be curved.





Key Features

No brackets required

Screws directly into substrate

Can be curved

Universal Retro REXframe®

RX-100 / RX-101 / RX-124 / RX-125 / RX-261 / RX-262

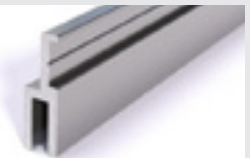
The versatile and practical Universal and Retro profiles are a great introduction to the REXframe easy solution system.

Just simply screw onto an existing surface, inside a cavity or onto existing light box frame to convert traditional printing into a fabric graphic alternative.

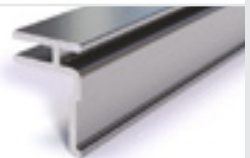
These profiles can be used for a wide variety of situations. An upgrade to an easy and cost effectively option, offering a whole new look.

Quick, tool free fabric graphic changes in seconds.

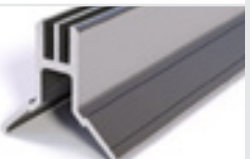
RX-100



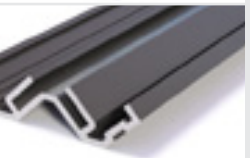
RX-101



RX-124



RX-125



RX-261



RX-262





System Adapters REXframe®

RX-102 / RX-103 / RX-115 / RX-116

The system adapters profiles are designed to convert common and existing systems to the REXframe solution.

Simply clip or slide into the track of other popular systems without having to rebuild or redesign your creation. It converts your rigid printed panel into a new look vibrant fabric graphic. Seamless, easy to ship, install and replace.

REXframe, every fabric graphic solution covered!

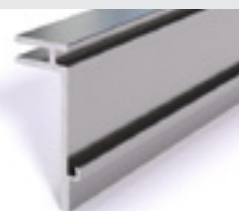
Key Features

Simply clips into or slides into the track of other popular systems

Can be illuminated

Can conceal existing systems

RX-102



RX-103



RX-115



RX-116





Single Sided REXframe®

RX-104 / RX-104B / RX-112 / RX-118

REXframe single-sided options are the simplest of all the profiles.

With a lightweight aluminium frame and custom printed fabric, the frame is assembled prior to installation and can be wall mounted or suspended.

It offers stylish signage simply.

As a back wall in an exhibition or in retail space, on stage or for directional signage, the Single Sided REXframe has many applications and its true beauty is in the ease of changing the fabric print. This is a great option if you need to change the scenery with the season or to change the look of your space.

Key Features

Wall mounted or suspended

Can be curved

Easy installation using minimal clips into substrate



RX-104



RX-104B



RX-112



RX-118



Key Features

Can be suspended or freestanding using clip on feet

Can be curved

Double Sided REXframe®

RX-105 / RX-105B / RX-119

Freestanding or suspended, the Double Sided REXframe profiles can display the same or different artwork on each side. Perfect for media walls, stage backdrops, petitioning a room, directional or promotional signage, this profile is a great solution for public space with high traffic.

The freestanding Double Sided REXframe has two sturdy feet to provide the required stability for any event and can be easily assembled, dismantled and stored.

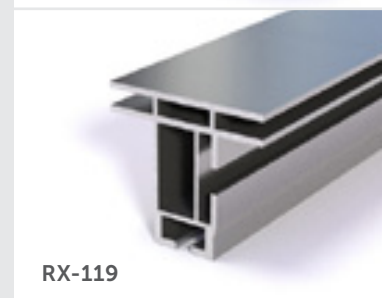
Offering "more bang for your buck", this double sided option gets double the attention.



RX-105



RX-105B



RX-119



Shapes & Forms REXframe®

RX-106 / RX-107 / RX-105 / RX-112
RX-200 / RX-202 / RX-256 / RX-257

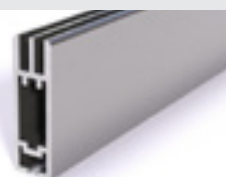
Creating 3D shapes are a breeze when utilising these unique profiles in conjunction with the REXframe patented knuckles. It is the ultimate in style and versatility.

Most effective when it's large and suspended with more than twice the capacity for branding opportunities.

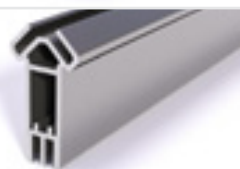
A perfect solution for events, exhibition and maximum retail impact.

REXframe, thinking outside the box!

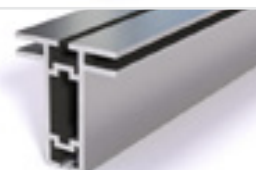
RX-106



RX-107



RX-105



RX-112



RX-200



RX-202



RX-256



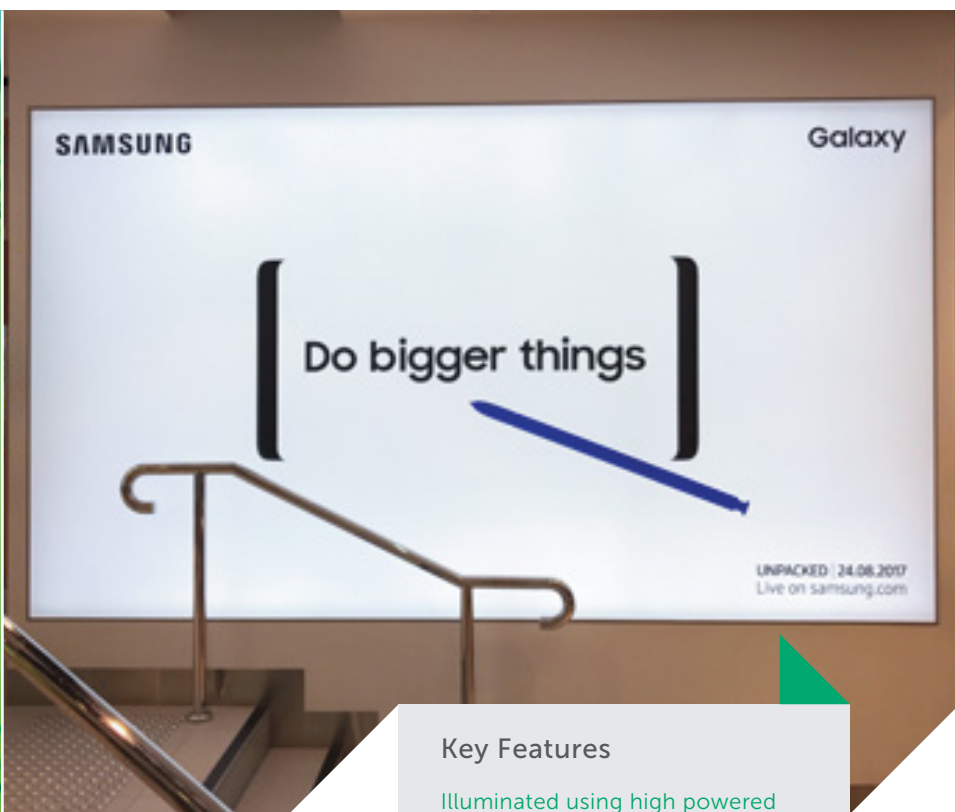
RX-257



Key Features

Can be curved

Can be suspended or freestanding



Lightbox REXframe®

RX-108 / RX-110 / RX-120 / RX-121

The REXframe Lightbox profiles use low voltage LED lighting and create a beautiful, eye catching effect at any event, exhibition or retail environment.

The LED lighting provides bright, even illumination with long life and low power consumption. The 24 volt LED modules simply clip into the frame and are easily removed when dismantling. As with all REXframe systems, the print can be easily changed to match the season, event or promotion.

Available in double sided, single sided, slim line and the ADA compliant D'LiTe option.

The Light Box is brilliant and brightens up any space simply and tastefully.

Key Features

Illuminated using high powered 24 volt LED modules

Can be suspended or freestanding using clip on feet

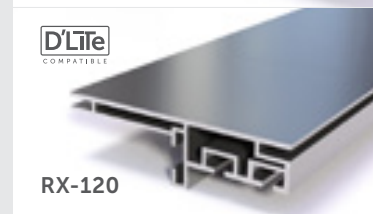
Can be curved



RX-108



RX-110



RX-120



RX-121



Support Structure REXframe®

RX-111 / RX-113 / RX-114

Building large structures or a simple freestanding 'step and repeat' the support and structural profile range puts REXframe in a league of its own.

Simply adding these engineered structural profile gives the added ability to build REXframe to impressive proportions.

REXframe thinking of everything.

Key Features

Clips into most profiles using REXframe locks

Can be curved



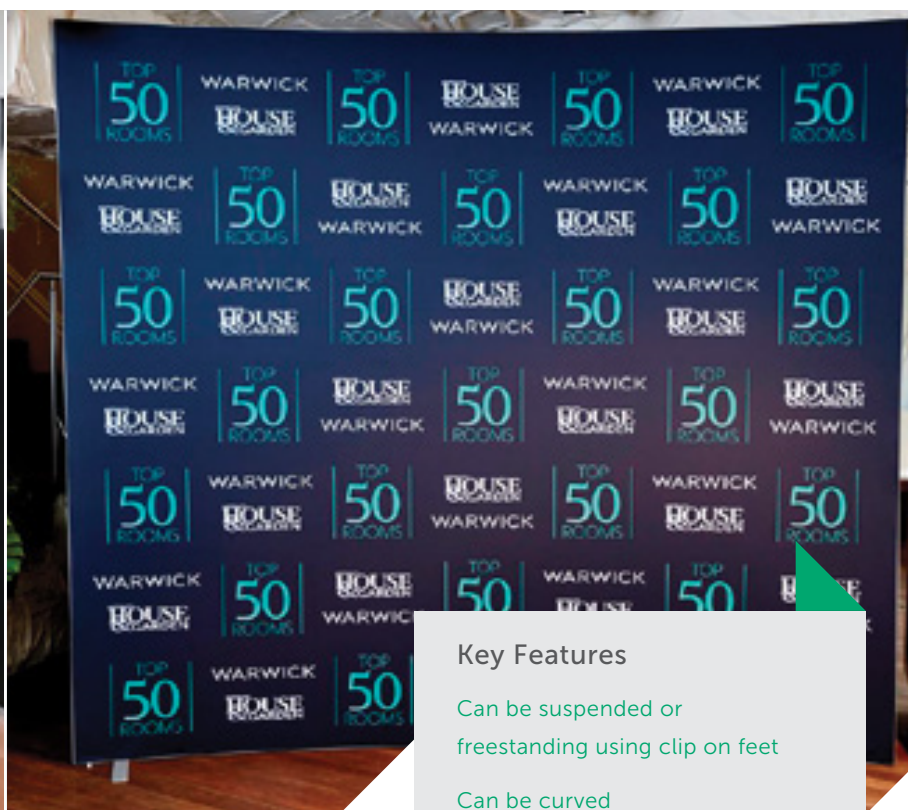
RX-111



RX-113



RX-114



Key Features

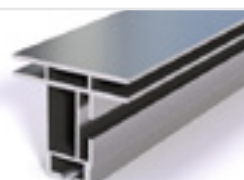
- Can be suspended or freestanding using clip on feet
- Can be curved

D'LiTe
COMPATIBLE



RX-118

D'LiTe
COMPATIBLE



RX-119

D'LiTe
COMPATIBLE



RX-120

D'LiTe
COMPATIBLE



RX-203

D'LiTe
COMPATIBLE



RX-225

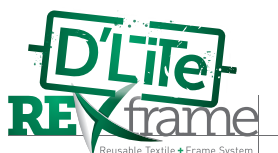
REXframe® D'LiTe Range

RX-118 / RX-119 / RX-120

Freestanding or suspended, the Double Sided REXframe profiles can display the same or different artwork on each side. Perfect for media walls, stage backdrops, petitioning a room, directional or promotional signage, this profile is a great solution for public space with high traffic.

The freestanding Double Sided REXframe has two sturdy feet to provide the required stability for any event and can be easily assembled, dismantled and stored.

Offering "more bang for your buck", this double sided option gets double the attention.





REXwall System

RX-117 / RX-126 / RX-127 / RX-105
RX-232 / RX-258 / RX-259 / RX-260 / RX-263

The REXwall System was designed as a simple way to create booths and partitions, specifically aimed at the end user.

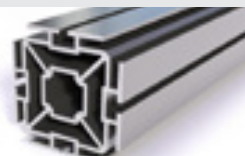
Ideal for exhibition, retail and office environments, the simple locking system allows the frames to be put together quickly and easily, with no prior experience needed. A simple lock key is all that is needed to create a space within minutes.

Shelving, accessories & lighting can also be added, making the REXwall range one of the most versatile.

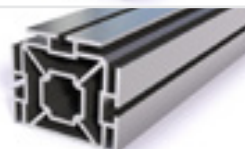
Key Features

- Simple locking system
- Easily create booths & partitions

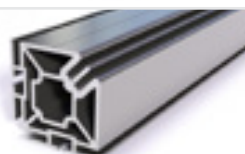
RX-117



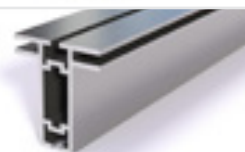
RX-126



RX-127



RX-105



RX-232



RX-258



RX-259

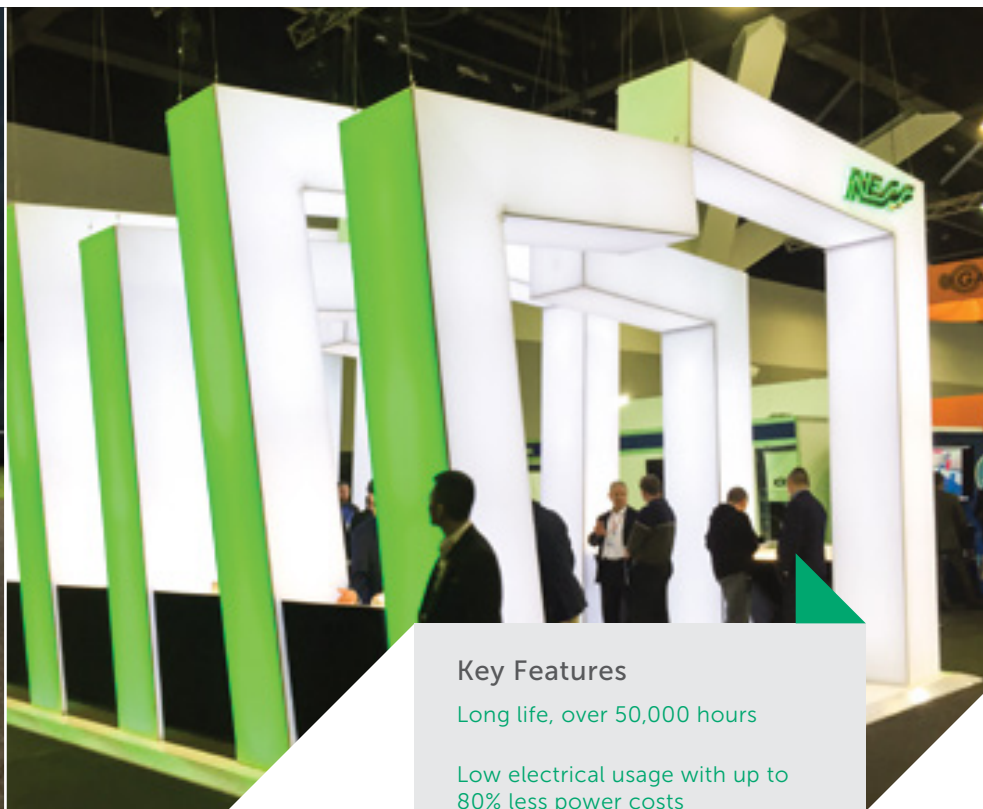


RX-260



RX-263





Key Features

Long life, over 50,000 hours

Low electrical usage with up to 80% less power costs

High brightness of approximately 720 net Lumens per module

24 volt LED modules that simply clip into the frame

RX-300



RX-301



RX-311



RX-314



LED Lights REXframe®

RX-300 / RX-301 / RX-311 / RX-314

REXframe lightboxes are available in Edge lit or the LaddeREX System.

These are designed to ensure intense and uniform illumination of the signs, with the additional benefit of long life and low power consumption. LED lights are the smart lighting choice, giving better results at a fraction of the energy cost.

LED lighting modules are simply clipped into the frame and easily removed when dismantling.

LED saves power and the environment.



Single Sided
Knuckle | RX-200



Double Sided
Knuckle | RX-202



Standard
Elbow | RX-203



Heavy Duty
Elbow | RX-204



Heavy Duty
Joiner | RX-205



T-Nut | RX-206



Knurled
Nut | RX-207



Wall Clip | RX-208



Eyebolt | RX-209



U-Bolt | RX-210



40 Structure
Lock | RX-211



90° Lock | RX-212



45° Lock
(Right) | RX-213-R



45° Lock
(Left) | RX-213-L



Heavy Duty
Feet | RX-216



80 Structure
Lock | RX-217



Cube
Clamp | RX-222



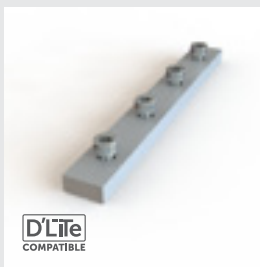
Silicon Rubber
Strip | RX-223



Corner
Brace | RX-224



Flat Elbow | RX-225



Standard
Joiner | RX-226



105 Bracket | RX-227

Accessories



Standard Feet | [RX-228](#)



Coupling Bolt | [RX-229](#)



Tool Free Elbow | [RX-230](#)



Tool Free Joiner | [RX-231](#)



105 Corner Knuckle | [RX-232](#)



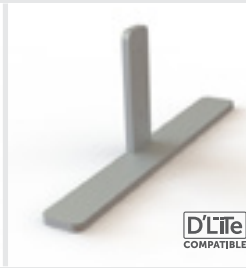
108 Cube Knuckle | [RX-233](#)



110 Cube Knuckle | [RX-234](#)



Flat Feet | [RX-235](#)



L Shaped Feet | [RX-236](#)



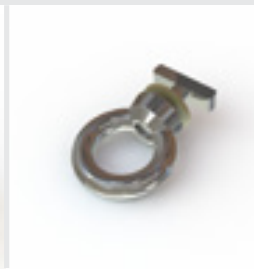
L Shaped Feet (Black) | [RX-236B](#)



Obtuse Angle 'Wing' Kit | [RX-241](#)



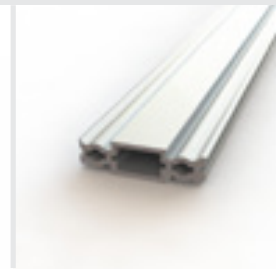
Acute Angle 'Disc' Kit | [RX-242](#)



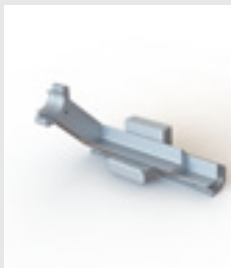
Rigging Profile Ring | [RX-243](#)



Heavy Duty T-Nut | [RX-244](#)



80 Structure Joiner | [RX-245](#)



108 Corner Knuckle | [RX-246](#)



110 Corner Knuckle | [RX-247](#)



Magnetic Shelf Kit (Small) | [RX-248](#)



Magnetic Shelf Kit (Large) | [RX-249](#)



Acrylic Shelf | [RX-250](#)



40 Structure Cap | [RX-252](#)



80 Structure Cap | [RX-253](#)



Heavy Duty Shelf Adapter | [RX-254](#)



Adjustable Heavy Duty Elbow | [RX-255](#)



45 Degree Knuckle | [RX-256](#)



60 Degree
Knuckle | [RX-257](#)



REXwall
Post Cap | [RX-258](#)



REXwall
Tri Post Cap | [RX-259](#)



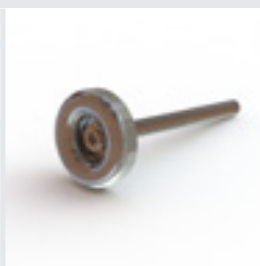
REXwall Corner
Post Cap | [RX-260](#)



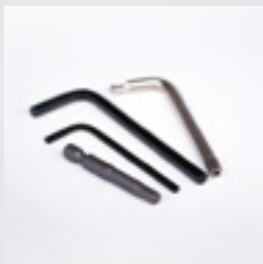
Universal Internal
Knuckle | [RX-261](#)



Universal External
Knuckle | [RX-262](#)



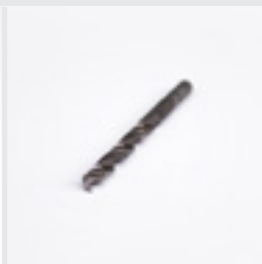
REXwall Adjustable
Foot | [RX-263](#)



REXkey Kit | [RX-404](#)



Drill Guide | [RX-405](#)



Knuckle
Drill Bit | [RX-406](#)



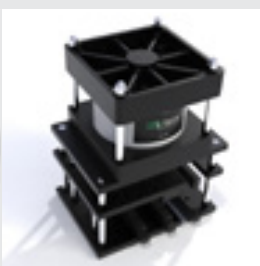
Lock
Drill Bit | [RX-407](#)



Gasket Sewing
Guide | [RX-408](#)



Sample Kit | [RX-409](#)



Pneumatic
punch | [RX-410](#)



POS Kit | [RX-500](#)

Tools



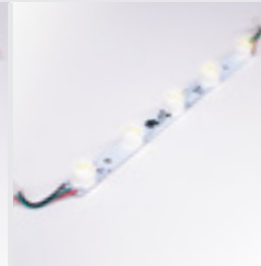
9-Light
Module | [RX-300](#)



9-Light Dimmable
Module | [RX-300-DIM](#)



9-Light Mini
Module | [RX-300-MINI](#)



5-Light
Module | [RX-301](#)



5-Light Dimmable
Module | [RX-301-DIM](#)



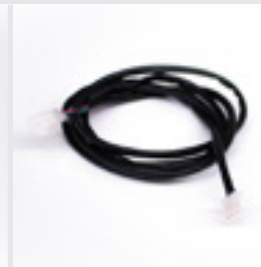
6 AMP
Transformer | [RX-303](#)



3"
Connector | [RX-304](#)



12"
Connector | [RX-305](#)



6ft
Connector | [RX-306](#)



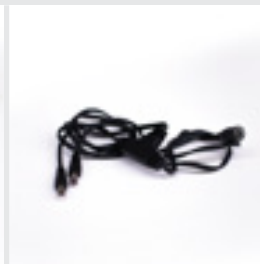
Single Module
Transformer | [RX-307](#)



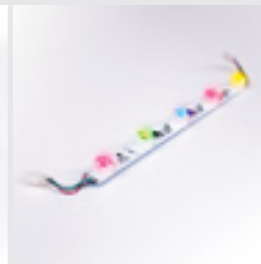
Halogen Arm
Light | [RX-308](#)



LED Arm
Light | [RX-309](#)



Parallel
Connector | [RX-310](#)



RGB 5-Light
Module | [RX-311](#)



RGB Standard
Controller | [RX-312](#)



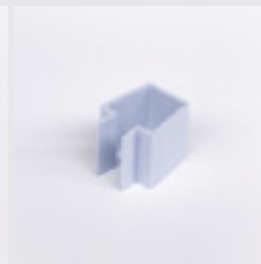
RGB Programmable
Controller | [RX-313](#)



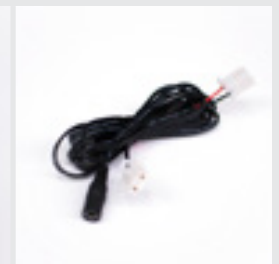
LadderEX
Module | [RX-314](#)



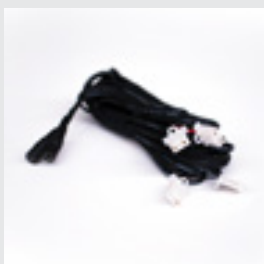
Single Wire
Clip | [RX-316](#)



Multi Wire
Clip | [RX-317](#)



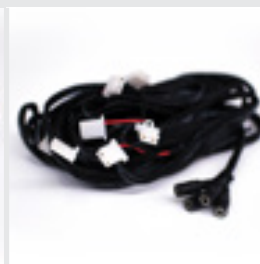
10/6 Module Wire
Harness | [RX-318](#)



20/12 Module Wire
Harness | [RX-319](#)



30/18 Module Wire
Harness | [RX-320](#)



40/24 Module Wire
Harness | [RX-321](#)

Lighting



8' 318
Extension | [RX-322](#)



8' 319
Extension | [RX-323](#)



8' 320
Extension | [RX-324](#)



8' 321
Extension | [RX-325](#)



Power
Repeater | [RX-326](#)



Dimmer | [RX-327](#)



13.5 AMP
Transformer | [RX-330](#)



25 AMP
Transformer | [RX-331](#)



3.125 AMP Inline
Transformer | [RX-332](#)



Power Lead
For 332 | [RX-333-US](#)



Connecting Lead
For 332 | [RX-334](#)



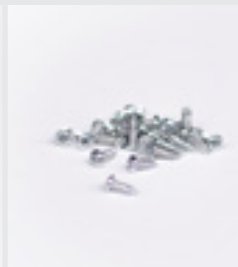
7.5 AMP
Transformer | [RX-335](#)



End Cap
For 332 | [RX-336](#)



314 Saddle | [RX-340](#)



314 Screws | [RX-341](#)



314 Wire
White | [RX-342-WHITE](#)



314 Wire
Yellow | [RX-342-YELLOW](#)



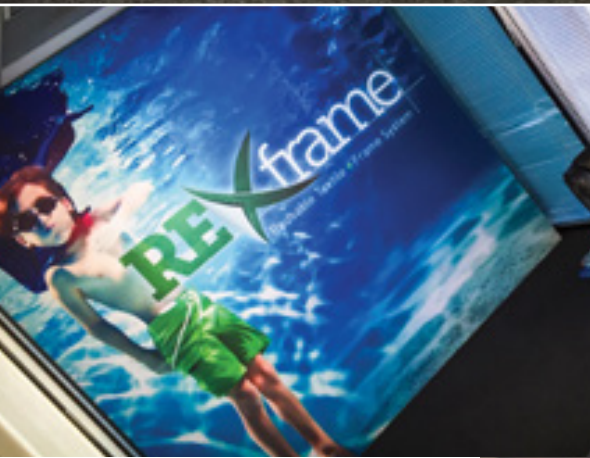
Inline
Adapter | [RX-343](#)



314 Clip | [RX-344](#)



Wire
Connector | [RX-345](#)









www.REXframe.com



Contact your local Distributor